

Segmentation of skin cancer images using a structured sequence of image processing steps for optimizing decision support consultations in melanoma diagnosis

Spiros Kostopoulos¹, Dimitris Glotsos¹, Pantelis Asvestas¹, Konstantinos Sidiropoulos², Christos Konstandinou³, George Xenogiannopoulos¹, Eirini-Konstantina Nikolatou¹, George Sakellaropoulos³, Spyros Mantzouratos⁴, Konstantinos Perakis⁴, and Dionisis Cavouras¹

¹Medical Image and Signal Processing Laboratory (MEDISP Lab), Department of Biomedical Engineering, Technological Educational Institute of Athens, Greece

²European Bioinformatics Institute (EMBL-EBI), European Molecular Biology Laboratory, Wellcome Trust Genome Campus, Hinxton, Cambridge, UK

³Department of Medical Physics, University of Patras, 26504, Rio, Patras, Greece

⁴UBITECH Research Department, UBITECH Ltd., Athens, Greece

Introduction

Early diagnosis of melanoma is essential for successful treatment outcomes, since the disease is more vulnerable to available treatments at its early stages (Robinson, 2000). Computer-based image analysis and Decision Support Systems (DSS) have been proposed as potential second opinion tools to enhance the accuracy of self-skin examination and guide patients towards the urgency of a physician visit (Gilmore et al., 2010, Rahman and Bhattacharya, 2010, Dreiseitl et al., 2007). DSS systems rely on pattern recognition and artificial intelligence approaches in order to assess the nature of suspicious moles. The advent of smartphone technology has made feasible the incorporation of DSS into web applications and Application Program Interfaces (APIs) (Rexhepaj et al., 2013, Do et al., 2014, Vano-Galvan et al., 2015). Such systems may offer complementary information to the physician, assisting towards early diagnosis and reduction of falsely characterized as disease-free cases for people who actually suffer by the disease. Additionally, such systems may alert patients to visit the dermatologist for suspicious moles increasing the probability of early stage detection of the disease. The reliability and accuracy of DSS consultation greatly depends on the reliability and accuracy of the segmentation algorithm that is used to isolate pixels belonging to the mole region from pixel belonging to the surrounding background region (Kiani and Sharafat, 2011). Erroneously circumscribed moles are likely to produce misleading DSS consultations failing to properly guide patients and physicians towards successful advices. The aim of this study is to design, develop and implement a structured sequence of image processing steps to facilitate mole segmentation in skin cancer images.

Methods

The proposed image segmentation algorithm consists of four stages:

Stage 1: Application of DullRazor algorithm for hair removal. The DullRazor algorithm is based on a method that has been presented by T. Lee (T. Lee, 1997) as a pre-processing method for removing dark hairs from an image. The algorithm consists of three main steps: **1)** identifying the dark hair locations, **2)** replacing the hair-pixels by the nearby non-hair pixels and **3)** smoothing the final result. Step 1: in order to locate the dark hairs a generalized grayscale morphological closing operation has been applied to each one of the three color bands separately. This operation smooth out the low intensity values such as the thick dark hair pixels along the structure element direction. Step 2: Interpolation Function represents the interpolation step where the acquired, in step 1, binary hair mask is used for replacing the corresponding pixel value in the original image by the nearby non-hair pixel values.

Stage 2: Mean shift filtering algorithm. The mean shift filtering algorithm produces a filtered “posterized” image with color gradients and fine-grain texture flattened.

Stage 3: Otsu’s thresholding (Gonzalez and Woods, 2002) for obtaining a preliminary gross estimation of the mole’s boundaries. Otsu’s thresholding is an optimum method for global thresholding because it maximizes the variance between classes. The concept is that well thresholding classes should be distinct with respect to the intensity values of their pixels and, conversely, that a threshold giving the best separation between classes in terms of their intensity values would be the best (optimum) threshold.

Stage 4: Otsu’s thresholding provides an initial rough segmentation of the mole region. The final segmentation is obtained by applying the region growing algorithm (Gonzalez and Woods, 2002). The region growing algorithm starts from an initial seed point. Then, if the color of its neighboring pixels is similar to the color of the seed point, the points will be added to the region. The same process is repeated for the neighboring pixels of the lastly added points, until no points with similar to the seed’s color point are found.

Results

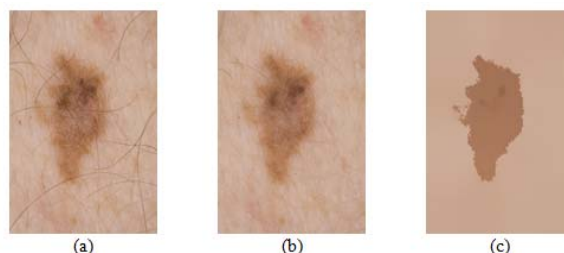


Figure 1. Example of image smoothing (a) Original Image, (b) Application of the DullRazor algorithm for hair removal. (c) Mean shift filtering



Figure 2. Example of image segmentation (a) Smoothed Image, (b) Segmented, (c) Final delineation of mole’s boundary.

Discussion

The Figure 1 illustrates an example of image pre-processing. It is apparent that hair pixels are effectively smoothed out following the application of DullRazor algorithm, whereas the application of the mean filtering algorithm facilitates separation of the mole region from surrounding background. Figure 2 depicts an example of image segmentation. Initially, an estimation of the mole region is obtained using Otsu’s thresholding. The final contour of the mole is obtained following the application of region algorithm. The proposed segmentation pipeline was integrated into MARK1 platform, which may be used for early stage detection of melanoma. The accuracy of MARK1 platform in predicting melanoma cases using the proposed segmentation pipeline converged to 85% platform using both dermatology and normal smartphone camera images. This accuracy was obtained using a pattern recognition system employing the Probabilistic Neural Network classifier, the leave-one-out method for classifier performance evaluation, the exhaustive search for feature selection and quantitative features describing the mole’s texture (first order, second order), morphology and shape.

Acknowledgements

RESEARCH ACTIVITIES OF THIS WORK HAVE BEEN CARRIED OUT WITHIN THE CONTEXT OF THE PROJECT “MARK1- A DECISION SUPPORT SYSTEM FOR THE EARLY DETECTION OF MALIGNANT MELANOMA” WITH REF. NUMBER ISR_3233, UNDER THE BILATERAL COOPERATION BETWEEN GREECE & ISRAEL ACTION 2013-2015 THAT HAS BEEN CO-FUNDED BY THE EUROPEAN UNION AND THE GENERAL SECRETARIAT FOR RESEARCH & TECHNOLOGY, MINISTRY OF EDUCATION, RESEARCH AND RELIGIOUS AFFAIRS OF THE HELLENIC REPUBLIC.



Ε. Π. Αναγνωστिकότητα και Επιχειρηματικότητα (ΕΠΑΝ II), ΠΕΠ Μακεδονίας – Θράκης, ΠΕΠ Κρήτης και Νήσων Αιγαίου, ΠΕΠ Θεσσαλίας – Στερεάς Ελλάδας – Ηπειρού, ΠΕΠ Αττικής